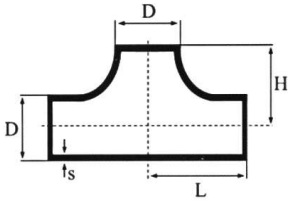
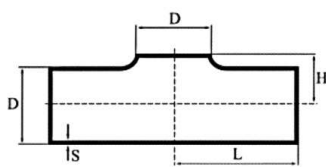


Trójniki spawane wg DIN 2615



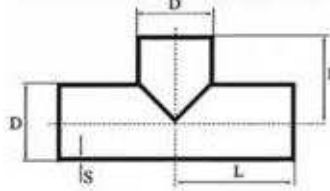
Wykonywane w gatunkach:
1.4301(7), 1.4401(4), 1.4541

Trójniki spawane krótkie wg ISO



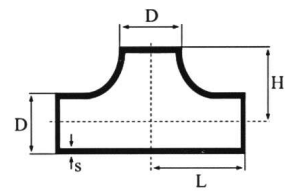
Wykonywane w gatunkach:
1.4301(7), 1.4401(4), 1.4541

Trójniki spaw. równoram. wg ISO 5251



Wykonywane w gatunkach:
1.4301(7), 1.4401(4), 1.4541

Trójniki b/szwu wg DIN 2615



Wykonywane w gatunkach:
1.4301(7), 1.4401(4), 1.4541

DN	Wymiar D x s	L mm	H mm	Waga kg
15	21,3x2,00	25	25	0,09
15	21,3x2,60	25	25	0,10
20	25,0x2,00	28	28	0,10
20	26,9x2,00	29	29	0,12
20	26,9x2,60	29	29	0,15
25	30,0x2,00	32	32	0,14
25	33,7x2,00	38	38	0,20
25	33,7x2,60	38	38	0,25
25	33,7x3,60	38	38	0,35
32	38,0x2,00	43	43	0,21
32	38,0x2,50	43	43	0,27
32	42,4x2,00	48	48	0,32
32	42,4x2,60	48	48	0,4
32	42,4x3,20	48	48	0,57
40	48,3x2,00	57	57	0,46
40	48,3x2,60	57	57	0,55
40	48,3x2,90	57	57	0,55
50	60,3x2,00	64	64	0,57
50	60,3x2,60	64	64	0,74
50	60,3x2,90	64	64	0,86
65	76,1x2,60	76	76	1,04
65	76,1x2,90	76	76	1,29
80	88,9x2,00	86	86	1,16
80	88,9x2,30	86	86	1,45
80	88,9x2,60	86	86	1,70
100	114,3x2,30	105	105	2,00
100	114,3x2,60	105	105	2,60
100	114,3x2,90	105	105	2,67
125	139,7x2,60	124	124	3,85
125	139,7x3,00	124	124	4,40
125	139,7x4,00	124	124	4,80
150	168,3x2,60	143	143	3,85
150	168,3x3,00	143	143	6,00
150	168,3x4,00	143	143	8,00
200	219,1x3,00	178	178	9,55
200	219,1x4,00	178	178	12,70
200	219,1x5,00	178	178	16,50
250	273,0x3,00	216	216	9,25
250	273,0x4,00	216	216	12,30
300	323,9x4,00	254	254	19,30
350	355,6x3,00	280	280	18,00
400	406,4x3,00	305	305	21,00

DN	Wymiar D x s	L mm	H mm	Waga kg
10	17,2x1,60	26	10	0,03
15	21,3x1,60	26	12	0,04
20	26,9x1,60	29	15	0,06
25	33,7x2,00	38	19	0,14
32	38,0x1,50	48	21	0,12
32	42,4x2,00	48	23	0,19
40	48,3x2,00	57	26	0,26
50	60,3x2,00	64	33	0,37
65	76,1x2,00	76	41	0,56
65	76,1x2,90	76	41	0,83
80	88,9x2,00	86	48	0,77
80	88,9x2,90	86	48	1,10
100	114,3x2,00	105	61	1,22
100	114,3x2,90	105	61	1,76
125	139,7x2,00	124	76	1,75
125	139,7x2,90	124	76	2,50
150	168,3x2,00	143	92	2,36
150	168,3x2,90	143	92	3,50
200	219,1x2,00	178	118	4,50
200	219,1x2,90	178	118	5,80
250	273,0x2,90	216	148	8,50

DN	Wymiar D x s	L mm	H mm	Waga kg
32	38,0x2,5	43	43	0,27
40	44,5x2,5	51	51	0,44
50	57,0x2,5	64	64	0,72
100	108,0x2,5	105	105	1,45
125	133,0x3,0	124	124	4,30
150	159,0x3,0	143	143	5,50
250	273,0x2,0	216	216	7,01
250	273,0x3,0	216	216	10,70
250	273,0x4,0	216	216	14,20
300	304,0x2,0	254	254	9,70
300	306,0x3,0	254	254	15,30
300	324,0x2,0	254	254	9,70
300	324,0x3,0	254	254	15,30
300	324,0x4,0	254	254	19,50
300	324,0x5,0	254	254	25,70
350	356,0x3,0	279	279	17,60
350	356,0x4,0	279	279	21,90
350	356,0x5,0	279	279	30,90
400	406,0x3,0	305	305	24,20
400	406,0x4,0	305	305	30,30
400	406,0x5,0	305	305	37,60
450	457,0x3,0	343	343	31,20
450	457,0x4,0	343	343	39,00
450	457,0x5,0	343	343	48,50

DN	Wymiar D x s	L mm	H mm	Waga kg
10	17,2x2,3	20	20	0,06
15	21,3x2,0	25	25	0,09
15	21,3x2,6	25	25	0,09
15	21,3x2,9	25	25	0,11
15	21,3x3,6	25	25	0,13
15	21,3x4,0	25	25	0,15
20	25,0x2,0	28	28	0,10
20	25,0x2,5	28	28	0,21
20	26,9x2,0	29	29	0,12
20	26,9x2,6	29	29	0,16
20	26,9x2,9	29	29	0,18
20	26,9x4,0	29	29	0,22
25	33,7x2,0	38	38	0,19
25	33,7x2,6	38	38	0,25
25	33,7x2,9	38	38	0,28
25	33,7x3,2	38	38	0,30
25	33,7x3,6	38	38	0,35
25	33,7x4,0	38	38	0,40
25	33,7x4,5	38	38	0,42
32	42,4x2,0	48	48	0,32
32	42,4x2,6	48	48	0,40
32	42,4x2,9	48	48	0,46
32	42,4x3,6	48	48	0,57
32	42,4x4,0	48	48	0,60